

REDEVELOPMENT OF Smt. LL MUNDADA VIDYARTHI BHAVAN

मोहेश्वरी
विद्या प्रचारक
मंडळ

AT MULUND, MUMBAI



Welcome to Maheshwari Vidya Pracharak Mandal (MVPM)

Established in 1929, Maheshwari Vidya Pracharak Mandal (MVPM) is a pioneering organization dedicated to education, social welfare, and community development within the Maheshwari community in India. With a rich legacy spanning over nine decades, MVPM has been instrumental in shaping leaders who have excelled in industry, government, and entrepreneurship.

Impact and Achievements of Alumni

Annual Impact: Every year, approximately 9,000 lives are positively impacted by the various activities and initiatives of MVPM.

Volunteer (Karyakarta) Contribution:

- **Dedicated Volunteers:** Each activity of MVPM is led by a Local Management Committee. Over 350 enthusiastic volunteers (karyakartas) actively contribute to various projects and initiatives.
- **Learning and Growth:** Through their involvement, volunteers gain valuable skills, knowledge, and a profound sense of giving back to society.

Notable Achievements :

- **Community Development:** MVPM initiatives have led to tangible improvements in Education, Skill Development, and Socio-economic conditions within our communities.
- **Professional Success:** Many alumni have excelled in diverse fields, becoming leaders and change-makers in their Professions / Businesses / Society.
- **Global Impact:** Our network of over 5000 alumni extends globally, with members making significant contributions across borders.

Continued Commitment and Sustaining Impact:

We are committed to nurturing and leveraging the collective potential of our alumni to drive sustainable, positive change in society.

MVPM ACTIVITIES AT A GLANCE



Student Empowerment

- Scholarship/Financial Aid
- Ramkumarji Rathi Swavalamban Yojana
- Civil Services
- Free ship
- Laptop Distribution



Sports, Arts, Culture, Skill Development

- Mahesh Balbhawan, Pune
- Dronalaya
- Junior Dronalaya
- MVPM Career
- Samanvay Patrika
- MVPM SETU

• 350+ Karyakartas
• 9000+ Students



Recognition

- MVPM Maheshwari Scholar Award
- Maheshwari Global Star Award



Hostels

- VN Lahoti Boys Hostel, Model Colony, Pune
- RBHR Rathi Girls Hostel, Narayan Peth, Pune
- HR Rathi Girls Hostel, Model Colony, Pune
- MVPM Nirantar Girls Hostel, Karvenagar, Pune
- MVPM Laxmi Boys Hostel, Mukundnagar, Pune
- MVPM Baner Boys Hostel, Baner, Pune
- LL Mundada Boys Hostel, Mulund, Mumbai
- Dr Kalidas Malpani Boys Hostel, Loni, Ahmednagar
- Shri Murlidhar Sarda Boys Hostel, Tarakpur Ahmednagar
- Nuwal and Panpalia Girl's Hostel, Airoli, Navi Mumbai



New Initiatives

- International connect
- Finance Connect
- Technology Connect
- Sustainability



Education School/College

- Mahesh Vidyalay Semi English Medium, Pune
- Mahesh Vidyalay English Medium, Pune
- Damani Vidya Mandir, Solapur
- Mahesh English & SR Chandak English High School, Solapur
- Deshbhakt HR Soni Mahavidyalaya, Solapur

Four Major Activities Under Consideration



Boys Hostel
Total Capacity
180 Students



Residential Skill Development Center

Having Class Rooms, Laboratories with Required Hardware and Software, Hall Accommodating **200 Students** in Multiple Arrangements



Girls Hostel
Total Capacity
144 Students



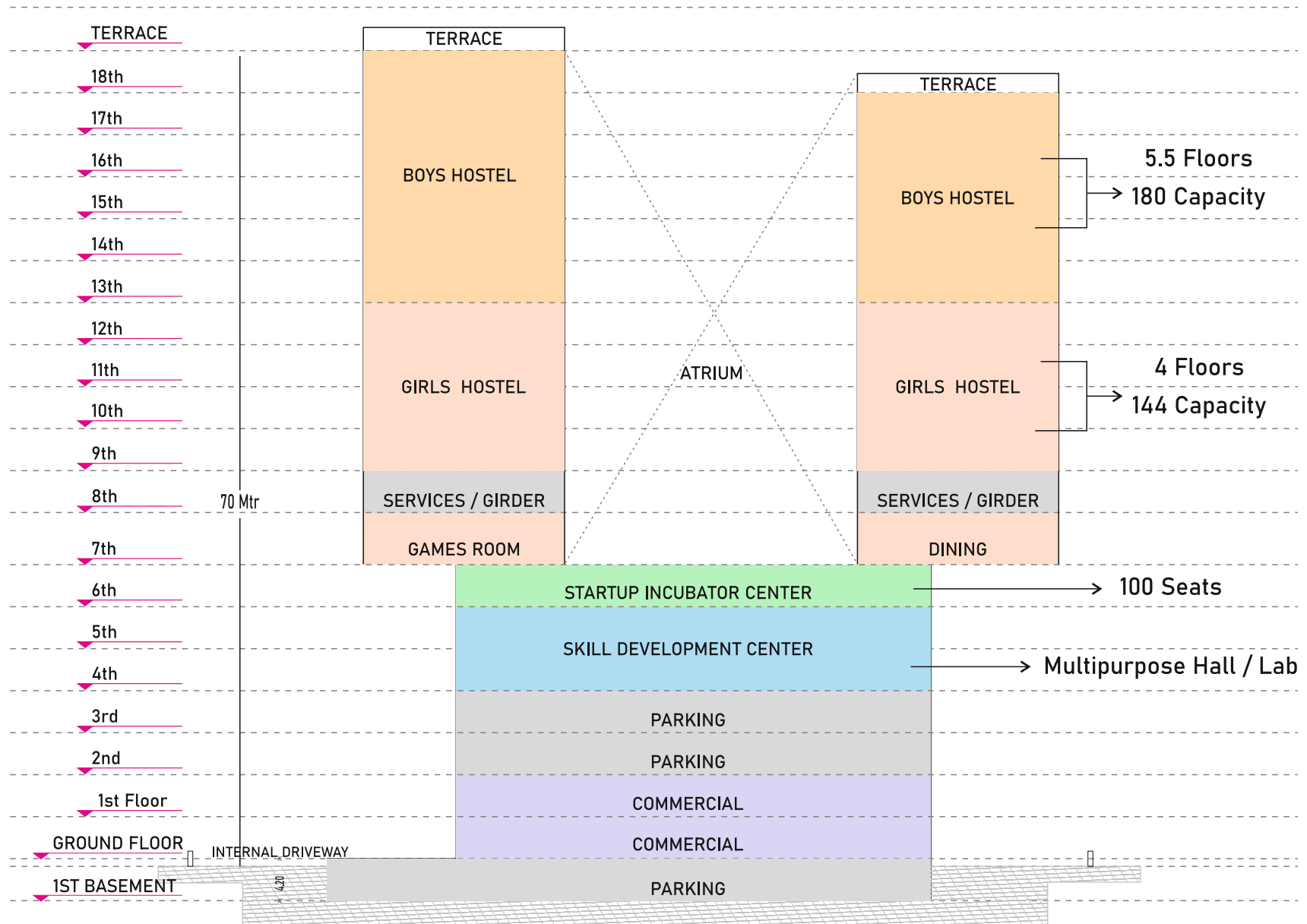
Start-up Incubation Center

100 Seats, Common Facilities like Conference Room, Cabins, etc.

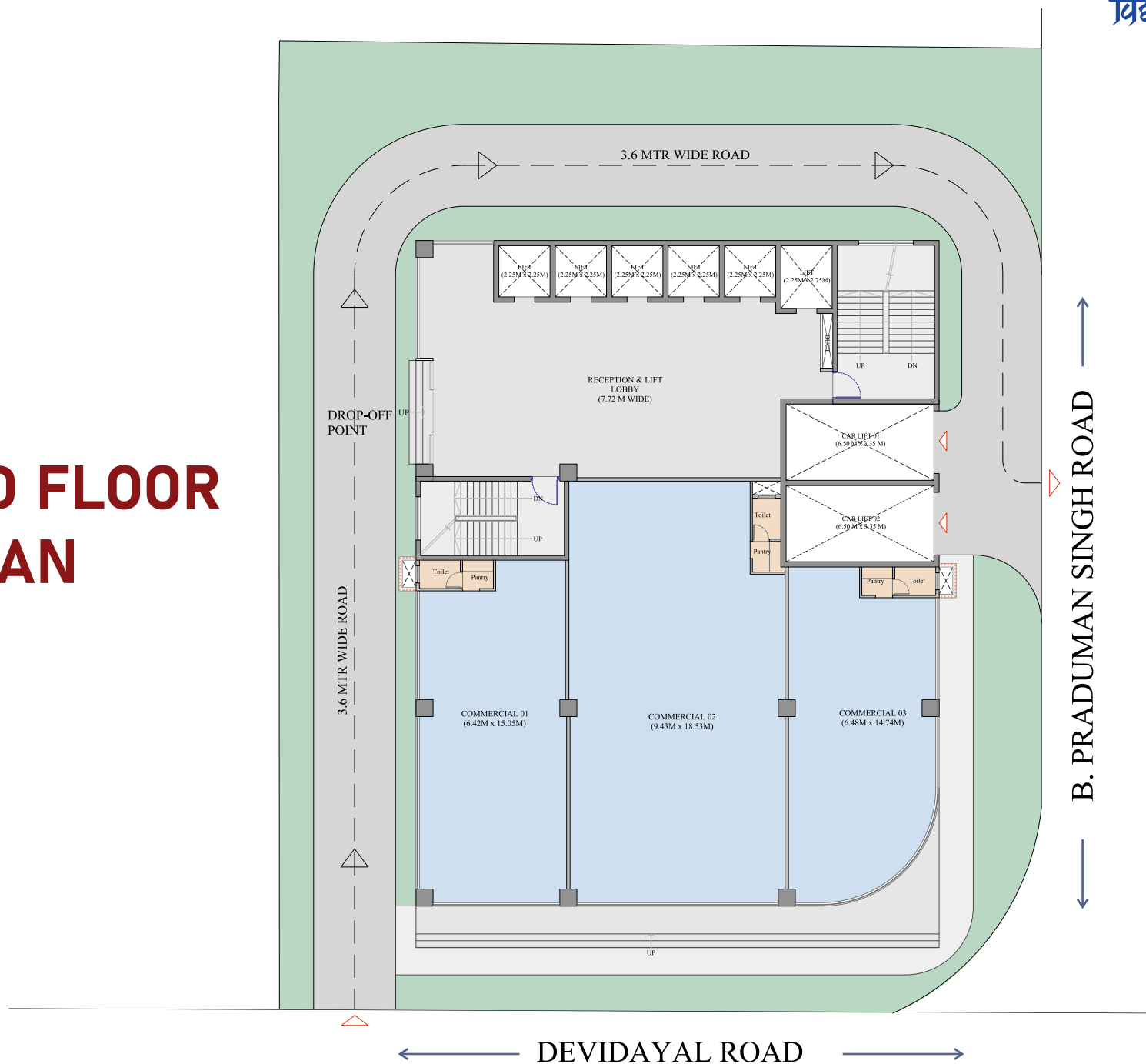
● **Total Students Beneficiary Every Year – 600+**

● **Over 60 Karyakartas can Contribute for Various Projects**

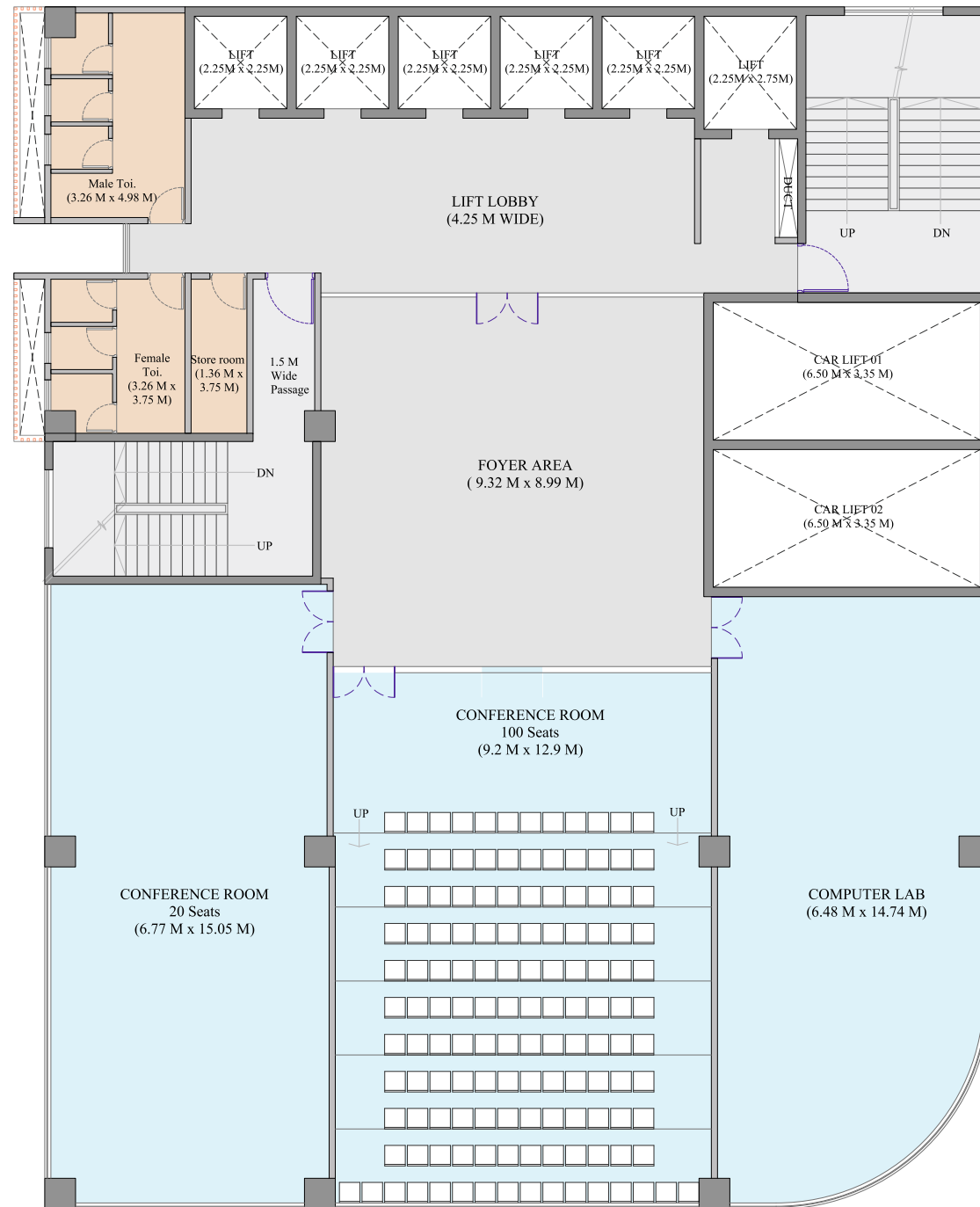
SCHEMATIC SECTION



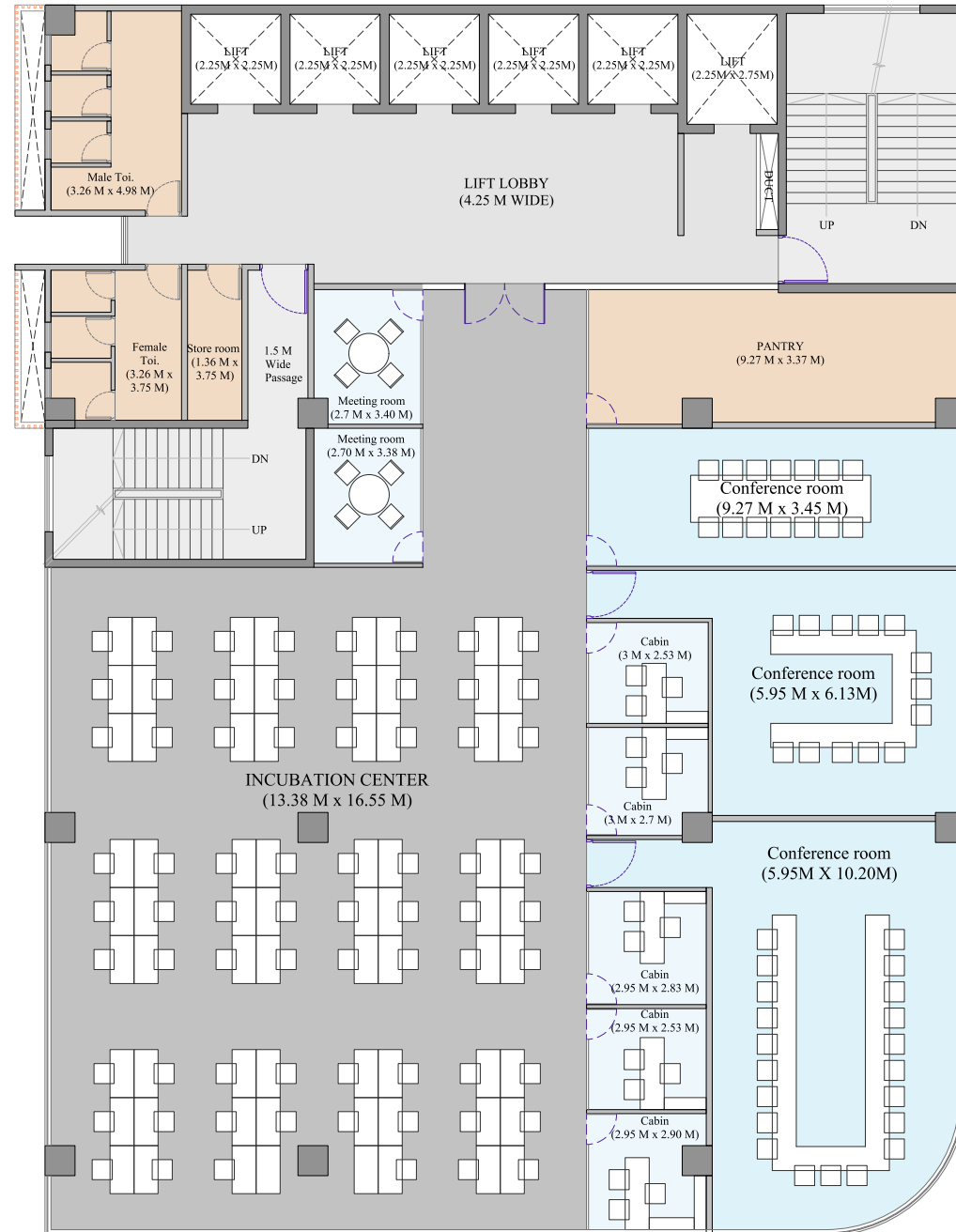
GROUND FLOOR PLAN



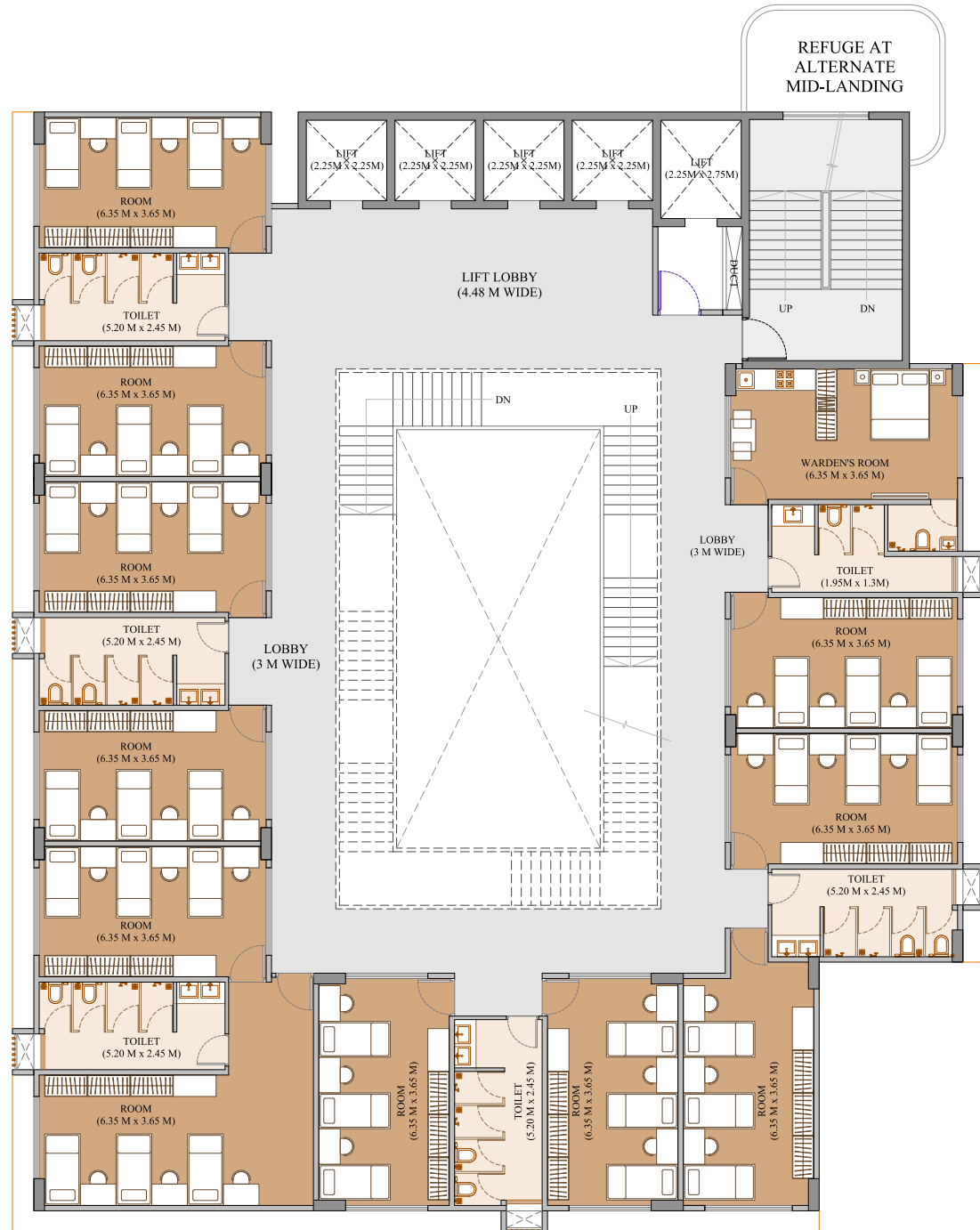
SKILL DEVELOPMENT CENTER



STARTUP INCUBATION CENTER (100 seater)



TYPICAL HOSTEL FLOOR (Capacity BOYS - 180 & GILRS - 144)



| | Area Sq. Mtr. |
|--|-----------------|
| 1 Area of Plot / Building | 1890.10 |
| 2 Deduction for | 440.10 |
| a) Set Back | 0.00 |
| b) Reservation | 440.10 |
| c) A.O.S. | 1450.10 |
| 3 Net area of plot | 1450.00 |
| 4 Additional for FSI purpose | |
| a) Set Back | 2175.00 |
| b) Govt. FSI | 1734.90 |
| c) TDR | 4350.00 |
| Total | 4350.00 |
| 5 Total permissible FSI 3+4 | 5800.00 |
| 6 Fungible FSI 5X0.35 | 2030.00 |
| 7 Total permissible FSI 5+6 | 7830.00 |
| 8 Staircase area approx | 1500.00 |
| 9 Land rate | 64240.00 |
| 10 Total Construction area habitable | 9830.00 |
| 11 Total construction area non habitable | 2000.00 |
| Total construction area | 11830.00 |

| | Project Cost | Rs in Lacs |
|---------------------------------------|--------------|-----------------|
| 1 Security fees / Permission Expenses | | 5.00 |
| 2 Staircase premium | | 24.09 |
| 3 Fungible FSI premium | | 782.44 |
| 4 Development charges | | 32.54 |
| 5 Deficiency premium approx | | 10.00 |
| 6 Development cess | | 40.18 |
| 7 Cess tax | | 19.28 |
| 8 TDR cost | | 841.38 |
| 9 0.5 FSI cost | | 139.72 |
| 10 CFO fees | | 10.27 |
| 11 Extra water charges | | 16.85 |
| 12 Royalty for collector | | 4.50 |
| 13 Assessment | | 18.62 |
| 14 Construction cost | | 4241.55 |
| 15 All consultant fees other exp | | 339.32 |
| 16 Interior Approx | | 1000.00 |
| Total Project Cost | | ~7500.00 |

Donation Scheme

Smt. LL Mundada Vidyarthi Bhavan Redevelopment Project

MVPM are thrilled to announce an exciting opportunity to be part of our community's transformative journey through the redevelopment of a State-of-the-art Multi-purpose Hub. This redevelopment initiative encompasses vital facilities including a **Boys Hostel**, **Girls Hostel**, **Skill Development Center** and a **Start-up Incubation Center** that will empower and uplift our youth for years to come.



Boys Hostel
₹ 7 Crore



Girls Hostel
₹ 7 Crore



Skill Development Center
₹ 7 Crore



Start-up Incubation Center
₹ 5 Crore



Terrace
₹ 2 Crore



Dining Hall & Kitchen
₹ 1 Crore



Reception Area
₹ 1 Crore



Sports Room
₹ 50 Lacs



Reading Room-Library
₹ 75 Lacs



Complete Floor
₹ 50 Lacs



Gym
₹ 50 Lacs



Office Area
₹ 30 Lacs



Rector Residence
₹ 25 Lacs



Lifts
₹ 25 Lacs



Hostel Room
₹ 10 Lacs



Multipurpose Halls / Conference Rooms
₹ 30 Lacs to 1 Crore

Total Project Cost - ₹ 75 Crore

Total Floors - 18

Total Construction Area - 1.30 Lacs Sq.ft.